



CARATTERISTICHE PRINCIPALI

SICUREZZA ATTIVA

- **Sistema Brevettato:** chiave con elemento mobile.
- **Security Card:** per la duplicazione controllata delle chiavi. Le chiavi possono essere duplicate da CISA e da CISA Solution Partner esclusivamente dietro la presentazione della Security Card.
- **Numero cifrature:** oltre 40 milioni.

SICUREZZA PASSIVA

- **Resistenza alla rottura e sfilamento - SIGILLO**
- Anima di sei lamelle rigide in acciaio temprato (maggiore resistenza) ed una flessibile in acciaio inox (maggiore flessibilità). Pacco lamellare esteso su tutta la lunghezza del cilindro e visibile da entrambi i lati anche a cilindro montato.
- **Resistenza alla spinta:** camma sporgente.
- **Resistenza al trapano:**
 - una spina in acciaio temprato inserita su entrambi i lati del corpo del cilindro
 - tre spine in acciaio temprato inserite nel cilindretto
 - perni controperni e perni passivi in acciaio cementato.
- **Resistenza al grimaldello:**
 - speciale sagoma dei controperni.
 - 1 perno attivo, sistema brevettato

POTENZIALITA' GESTIONE ACCESSI

- 132.000 cilindri diversi x una chiave MK (inclusi perni passivi).
- Altre configurazioni disponibili su richiesta.

AFFIDABILITA'

- 100.000 cicli.

NORMATIVE

- Conforme alla norma EN 1303:
 - Durata: grado 6 (100.000 cicli)
 - Sicurezza: grado 4
 - Utilizzabile su porte blindate classificate 1-3 UNI ENV 1627

CERTIFICAZIONI

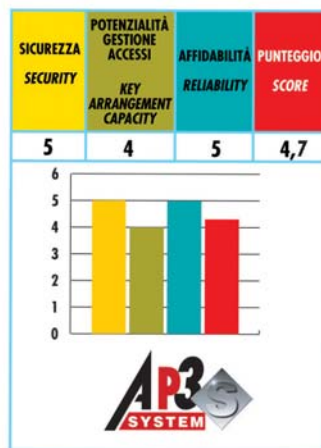
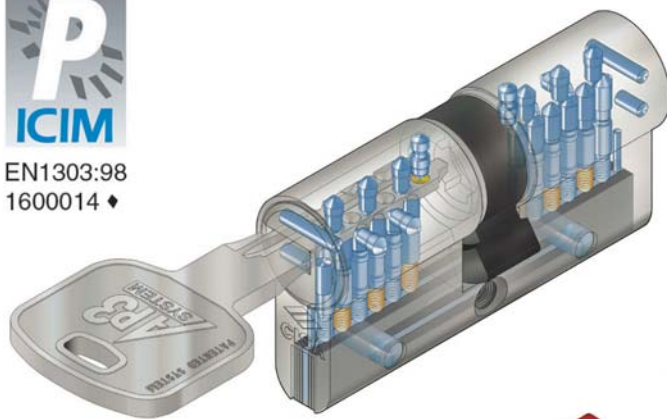
- ICIM EN 1303:98 1600014
- SKG**

BREVETTI

- PCT/EP99/07611
- Modello d'utilità B02003U000006 (Sigillo)



EN1303:98
1600014 ♦



Caratteristiche tecniche:

CILINDRO:

- Sistema di cifratura a 12 perni (6+1 attivi, 5 passivi)
- Corpo in ottone
- Cilindretti in ottone con pacco lamellare su tutta la lunghezza del cilindro (escluso mezzo cilindro, cilindri vari e da applicare)
- Camma DIN in acciaio sinterizzato autolubrificante
- Perni e controperni in acciaio cementato.
- Molle in bronzo fosforoso e acciaio

CHIAVE:

- piatta ad introduzione reversibile
- in alpacca
- numerazione a codice sulla testa

- spessore chiave 2,9 mm
- salto 0,48 mm
- compatibilità con borchia di protezione

Finiture:

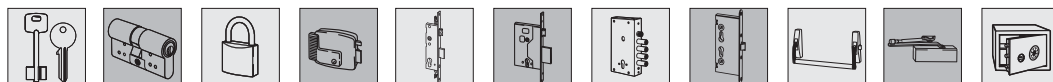
- Standard: ottone sabbiato nichelato (fin. 12)
- A richiesta: ottone lucido (fin. 66)

Opzioni a richiesta:

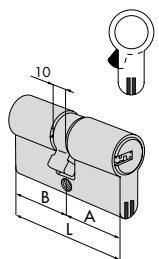
- KA, MK, GMK, GGMK, CE, CA, CL (chiave ALI) C5, PP e relative varianti.
- Sistema DADA, sistema 1,2,3, sistemi 1,2 e cantiere (solo in versione chiave ALI)

Dotazione standard:

- vite di fissaggio
- istruzioni d'uso e manutenzione
- 3 chiavi art. 1.00770.00.0
- SECURITY CARD

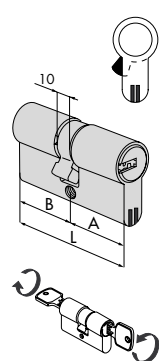


| Tipologia | Descrizione | Dim. comm. | | | | Chiave articolo | Kg | Unitario | Pezzi | ARTICOLO | | | | |
|-----------|-------------|------------|---|---|-------|-----------------|----|----------|-------|----------|------|-------|------|-------|
| | | L | A | B | Perni | | | | | Tipo | Dim. | Alomo | Fin. | Pers. |



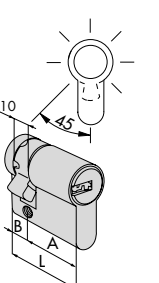
• Doppio cilindro SIGILLO

| | | | | | | | | | | |
|---------|-------|------|------|----|---|------------|-------|---|---|---------------|
| 30 / 30 | 59,0 | 29,5 | 29,5 | 12 | 1 | 00770 00 0 | 0,250 | 1 | 1 | OH350 07 0 12 |
| 30 / 35 | 64,0 | 29,5 | 34,5 | 12 | 1 | 00770 00 0 | 0,260 | 1 | 1 | OH350 26 0 12 |
| 33 / 33 | 65,0 | 32,5 | 32,5 | 12 | 1 | 00770 00 0 | 0,260 | 1 | 1 | OH350 10 0 12 |
| 40 / 30 | 69,0 | 39,5 | 29,5 | 12 | 1 | 00770 00 0 | 0,275 | 1 | 1 | OH350 12 0 12 |
| 35 / 35 | 69,0 | 34,5 | 34,5 | 12 | 1 | 00770 00 0 | 0,270 | 1 | 1 | OH350 13 0 12 |
| 30 / 45 | 74,0 | 29,5 | 44,5 | 12 | 1 | 00770 00 0 | 0,290 | 1 | 1 | OH350 27 0 12 |
| 35 / 40 | 74,0 | 34,5 | 39,5 | 12 | 1 | 00770 00 0 | 0,285 | 1 | 1 | OH350 28 0 12 |
| 30 / 50 | 79,0 | 29,5 | 49,5 | 12 | 1 | 00770 00 0 | 0,305 | 1 | 1 | OH350 17 0 12 |
| 35 / 45 | 79,0 | 34,5 | 44,5 | 12 | 1 | 00770 00 0 | 0,300 | 1 | 1 | OH350 19 0 12 |
| 40 / 40 | 79,0 | 39,5 | 39,5 | 12 | 1 | 00770 00 0 | 0,300 | 1 | 1 | OH350 18 0 12 |
| 30 / 55 | 84,0 | 29,5 | 54,5 | 12 | 1 | 00770 00 0 | 0,318 | 1 | 1 | OH350 33 0 12 |
| 35 / 50 | 84,0 | 34,5 | 49,5 | 12 | 1 | 00770 00 0 | 0,315 | 1 | 1 | OH350 31 0 12 |
| 40 / 45 | 84,0 | 39,5 | 44,5 | 12 | 1 | 00770 00 0 | 0,315 | 1 | 1 | OH350 30 0 12 |
| 30 / 60 | 89,0 | 29,5 | 59,5 | 12 | 1 | 00770 00 0 | 0,335 | 1 | 1 | OH350 20 0 12 |
| 35 / 55 | 89,0 | 34,5 | 54,5 | 12 | 1 | 00770 00 0 | 0,330 | 1 | 1 | OH350 32 0 12 |
| 40 / 50 | 89,0 | 39,5 | 49,5 | 12 | 1 | 00770 00 0 | 0,330 | 1 | 1 | OH350 21 0 12 |
| 45 / 45 | 89,0 | 44,5 | 44,5 | 12 | 1 | 00770 00 0 | 0,330 | 1 | 1 | OH350 29 0 12 |
| 40 / 55 | 94,0 | 39,5 | 54,5 | 12 | 1 | 00770 00 0 | 0,345 | 1 | 1 | OH350 42 0 12 |
| 45 / 50 | 94,0 | 44,5 | 49,5 | 12 | 1 | 00770 00 0 | 0,345 | 1 | 1 | OH350 39 0 12 |
| 30 / 70 | 99,0 | 29,5 | 69,5 | 12 | 1 | 00770 00 0 | 0,380 | 1 | 1 | OH350 24 0 12 |
| 35 / 65 | 99,0 | 34,5 | 64,5 | 12 | 1 | 00770 00 0 | 0,365 | 1 | 1 | OH350 22 0 12 |
| 40 / 60 | 99,0 | 39,5 | 59,5 | 12 | 1 | 00770 00 0 | 0,365 | 1 | 1 | OH350 25 0 12 |
| 45 / 55 | 99,0 | 44,5 | 54,5 | 12 | 1 | 00770 00 0 | 0,365 | 1 | 1 | OH350 43 0 12 |
| 50 / 50 | 99,0 | 49,5 | 49,5 | 12 | 1 | 00770 00 0 | 0,365 | 1 | 1 | OH350 23 0 12 |
| 30 / 80 | 109,0 | 29,5 | 79,5 | 12 | 1 | 00770 00 0 | 0,395 | 1 | 1 | OH350 37 0 12 |
| 40 / 70 | 109,0 | 39,5 | 69,5 | 12 | 1 | 00770 00 0 | 0,390 | 1 | 1 | OH350 35 0 12 |
| 50 / 60 | 109,0 | 49,5 | 59,5 | 12 | 1 | 00770 00 0 | 0,390 | 1 | 1 | OH350 36 0 12 |
| 55 / 55 | 109,0 | 54,5 | 54,5 | 12 | 1 | 00770 00 0 | 0,390 | 1 | 1 | OH350 70 0 12 |
| 40 / 80 | 119,0 | 39,5 | 79,5 | 12 | 1 | 00770 00 0 | 0,420 | 1 | 1 | OH350 60 0 12 |



• Doppio cilindro frizionato SIGILLO

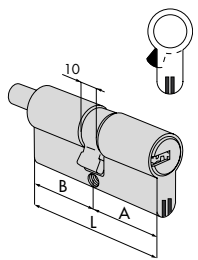
| | | | | | | | | | | |
|---------|-------|------|------|----|---|------------|-------|---|---|---------------|
| 30 / 30 | 59,0 | 29,5 | 29,5 | 12 | 1 | 00770 00 0 | 0,250 | 1 | 1 | OH351 07 0 12 |
| 40 / 30 | 69,0 | 39,5 | 29,5 | 12 | 1 | 00770 00 0 | 0,275 | 1 | 1 | OH351 12 0 12 |
| 35 / 35 | 69,0 | 34,5 | 34,5 | 12 | 1 | 00770 00 0 | 0,270 | 1 | 1 | OH351 13 0 12 |
| 30 / 50 | 79,0 | 29,5 | 49,5 | 12 | 1 | 00770 00 0 | 0,305 | 1 | 1 | OH351 17 0 12 |
| 35 / 45 | 79,0 | 34,5 | 44,5 | 12 | 1 | 00770 00 0 | 0,300 | 1 | 1 | OH351 19 0 12 |
| 40 / 40 | 79,0 | 39,5 | 39,5 | 12 | 1 | 00770 00 0 | 0,300 | 1 | 1 | OH351 18 0 12 |
| 45 / 45 | 89,0 | 44,5 | 44,5 | 12 | 1 | 00770 00 0 | 0,330 | 1 | 1 | OH351 29 0 12 |
| 40 / 50 | 89,0 | 39,5 | 49,5 | 12 | 1 | 00770 00 0 | 0,330 | 1 | 1 | OH351 21 0 12 |
| 50 / 50 | 99,0 | 49,5 | 49,5 | 12 | 1 | 00770 00 0 | 0,365 | 1 | 1 | OH351 23 0 12 |
| 40 / 60 | 99,0 | 39,5 | 59,5 | 12 | 1 | 00770 00 0 | 0,365 | 1 | 1 | OH351 25 0 12 |
| 50 / 60 | 109,5 | 49,5 | 59,5 | 12 | 1 | 00770 00 0 | 0,390 | 1 | 1 | OH351 36 0 12 |



- Mezzo cilindro con camma regolabile in 8 posizioni
- Corpo senza pacco lamellare

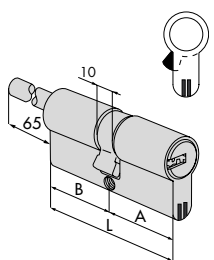
| | | | | | | | | | | |
|---------|-------|------|------|----|---|------------|-------|---|---|---------------|
| 30 / 10 | 39,5 | 29,5 | 10,0 | 12 | 1 | 00770 00 0 | 0,185 | 1 | 1 | OH314 02 0 12 |
| 35 / 10 | 44,5 | 34,5 | 10,0 | 12 | 1 | 00770 00 0 | 0,195 | 1 | 1 | OH314 07 0 12 |
| 40 / 10 | 49,5 | 39,5 | 10,0 | 12 | 1 | 00770 00 0 | 0,215 | 1 | 1 | OH314 03 0 12 |
| 45 / 10 | 54,5 | 44,5 | 10,0 | 12 | 1 | 00770 00 0 | 0,225 | 1 | 1 | OH314 08 0 12 |
| 50 / 10 | 59,5 | 49,5 | 10,0 | 12 | 1 | 00770 00 0 | 0,245 | 1 | 1 | OH314 04 0 12 |
| 60 / 10 | 69,5 | 59,5 | 10,0 | 12 | 1 | 00770 00 0 | 0,275 | 1 | 1 | OH314 05 0 12 |
| 65 / 10 | 74,5 | 64,5 | 10,0 | 12 | 1 | 00770 00 0 | 0,290 | 1 | 1 | OH314 21 0 12 |
| 70 / 10 | 79,5 | 69,5 | 10,0 | 12 | 1 | 00770 00 0 | 0,305 | 1 | 1 | OH314 06 0 12 |
| 80 / 10 | 89,5 | 79,5 | 10,0 | 12 | 1 | 00770 00 0 | 0,330 | 1 | 1 | OH314 20 0 12 |
| 95 / 10 | 104,5 | 94,5 | 10,0 | 12 | 1 | 00770 00 0 | 0,380 | 1 | 1 | OH314 13 0 12 |

| Tipologia | Descrizione | Dim. comm. | | | | Chiave articolo | Kg | Unitario | Pezzi | ARTICOLO | | | | |
|-----------|-------------|------------|---|---|-------|-----------------|----|----------|-------|----------|-------|------|-------|-------|
| | | L | A | B | Perni | | | | | Dim. | Alomo | Fin. | Pers. | Spec. |



- Doppio cilindro SIGILLO predisposto per montaggio pomolo
- A RICHIESTA:
Pomoli
-art. 1.06353.00
-art. 1.06354.00

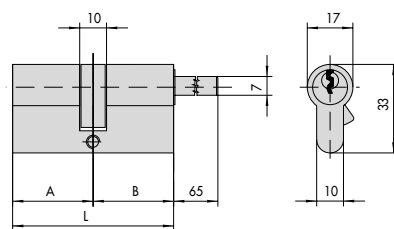
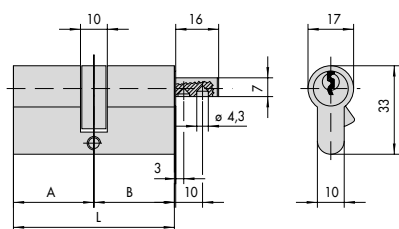
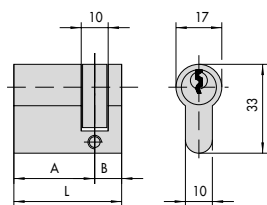
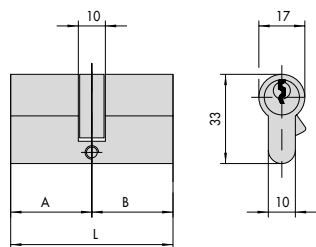
| | | | | | | | | | |
|---------|-------|------|------|----|--------------|-------|---|---|---------------|
| 30 / 30 | 59,0 | 29,5 | 29,5 | 12 | 1 00770 00 0 | 0,265 | 1 | 1 | OH3S2 07 0 12 |
| 33 / 33 | 65,0 | 32,5 | 32,5 | 12 | 1 00770 00 0 | 0,275 | 1 | 1 | OH3S2 10 0 12 |
| 30 / 35 | 64,0 | 29,5 | 34,5 | 12 | 1 00770 00 0 | 0,275 | 1 | 1 | OH3S2 26 0 12 |
| 35 / 35 | 64,0 | 34,5 | 29,5 | 12 | 1 00770 00 0 | 0,275 | 1 | 1 | OH3S2 81 0 12 |
| 30 / 40 | 69,0 | 29,5 | 39,5 | 12 | 1 00770 00 0 | 0,288 | 1 | 1 | OH3S2 82 0 12 |
| 40 / 30 | 69,0 | 39,5 | 29,5 | 12 | 1 00770 00 0 | 0,288 | 1 | 1 | OH3S2 12 0 12 |
| 35 / 35 | 69,0 | 34,5 | 34,5 | 12 | 1 00770 00 0 | 0,285 | 1 | 1 | OH3S2 13 0 12 |
| 35 / 40 | 74,0 | 34,5 | 39,5 | 12 | 1 00770 00 0 | 0,295 | 1 | 1 | OH3S2 28 0 12 |
| 40 / 35 | 74,0 | 38,5 | 34,5 | 12 | 1 00770 00 0 | 0,295 | 1 | 1 | OH3S2 83 0 12 |
| 30 / 50 | 79,0 | 29,5 | 49,5 | 12 | 1 00770 00 0 | 0,315 | 1 | 1 | OH3S2 17 0 12 |
| 35 / 45 | 79,0 | 34,5 | 44,5 | 12 | 1 00770 00 0 | 0,310 | 1 | 1 | OH3S2 19 0 12 |
| 40 / 40 | 79,0 | 39,5 | 39,5 | 12 | 1 00770 00 0 | 0,310 | 1 | 1 | OH3S2 18 0 12 |
| 45 / 35 | 79,0 | 44,5 | 34,5 | 12 | 1 00770 00 0 | 0,310 | 1 | 1 | OH3S2 85 0 12 |
| 40 / 45 | 84,0 | 39,5 | 44,5 | 12 | 1 00770 00 0 | 0,325 | 1 | 1 | OH3S2 30 0 12 |
| 45 / 40 | 84,0 | 44,5 | 39,5 | 12 | 1 00770 00 0 | 0,325 | 1 | 1 | OH3S2 84 0 12 |
| 50 / 35 | 84,0 | 49,5 | 34,5 | 12 | 1 00770 00 0 | 0,325 | 1 | 1 | OH3S2 94 0 12 |
| 30 / 60 | 89,0 | 29,5 | 59,5 | 12 | 1 00770 00 0 | 0,345 | 1 | 1 | OH3S2 20 0 12 |
| 40 / 50 | 89,0 | 39,5 | 49,5 | 12 | 1 00770 00 0 | 0,340 | 1 | 1 | OH3S2 21 0 12 |
| 45 / 45 | 89,0 | 44,5 | 44,5 | 12 | 1 00770 00 0 | 0,340 | 1 | 1 | OH3S2 29 0 12 |
| 40 / 55 | 94,0 | 39,5 | 54,5 | 12 | 1 00770 00 0 | 0,345 | 1 | 1 | OH3S2 42 0 12 |
| 45 / 55 | 99,0 | 44,5 | 54,5 | 12 | 1 00770 00 0 | 0,360 | 1 | 1 | OH3S2 43 0 12 |
| 50 / 50 | 99,0 | 49,5 | 49,5 | 12 | 1 00770 00 0 | 0,360 | 1 | 1 | OH3S2 23 0 12 |
| 55 / 50 | 104,0 | 54,5 | 49,5 | 12 | 1 00770 00 0 | 0,370 | 1 | 1 | OH3S2 64 0 12 |
| 55 / 60 | 114,0 | 54,5 | 59,5 | 12 | 1 00770 00 0 | 0,390 | 1 | 1 | OH3S2 71 0 12 |
| 60 / 60 | 119,0 | 59,5 | 59,5 | 12 | 1 00770 00 0 | 0,405 | 1 | 1 | OH3S2 40 0 12 |
| 65 / 55 | 119,0 | 64,5 | 54,5 | 12 | 1 00770 00 0 | 0,405 | 1 | 1 | OH3S2 86 0 12 |
| 60 / 50 | 109,0 | 59,5 | 49,5 | 12 | 1 00770 00 0 | 0,380 | 1 | 1 | OH3S2 89 0 12 |



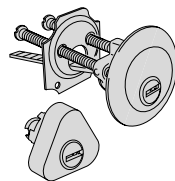
- Doppio cilindro SIGILLO predisposto per montaggio pomolo, con gambo accorciabile
- Da abbinare a borchia interna art. 1.06458.20
- A RICHIESTA:
Pomoli
-art. 1.06353.00
-art. 1.06354.00

| | | | | | | | | | |
|---------|------|------|------|----|--------------|-------|---|---|---------------|
| 30 / 30 | 59,0 | 29,5 | 29,5 | 12 | 1 00770 00 0 | 0,265 | 1 | 1 | OH3S7 07 0 12 |
| 35 / 30 | 64,0 | 34,5 | 29,5 | 12 | 1 00770 00 0 | 0,275 | 1 | 1 | OH3S7 81 0 12 |
| 40 / 30 | 69,0 | 39,5 | 29,5 | 12 | 1 00770 00 0 | 0,288 | 1 | 1 | OH3S7 12 0 12 |
| 45 / 30 | 74,0 | 44,5 | 29,5 | 12 | 1 00770 00 0 | 0,295 | 1 | 1 | OH3S7 91 0 12 |
| 50 / 30 | 79,0 | 49,5 | 29,5 | 12 | 1 00770 00 0 | 0,310 | 1 | 1 | OH3S7 90 0 12 |
| 60 / 30 | 89,0 | 59,5 | 29,5 | 12 | 1 00770 00 0 | 0,360 | 1 | 1 | OH3S7 87 0 12 |
| 70 / 30 | 99,0 | 69,5 | 29,5 | 12 | 1 00770 00 0 | 0,370 | 1 | 1 | OH3S7 88 0 12 |

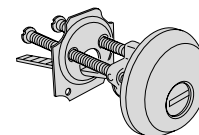
Disegni di ingombro



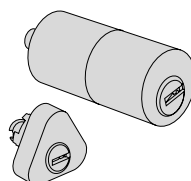
Altri modelli disponibili, senza pacco lamellare



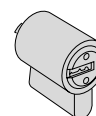
**1.OH112.00.0.12
1.OH114.00.0.12
1.OH156.00.0.12**



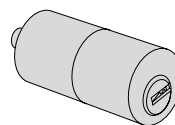
1.OH510.10.0.12



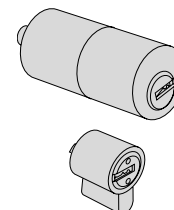
**1.OH149.00.0.12
1.OH155.00.0.12
1.OH116.00.0.12
1.OH120.00.0.12**



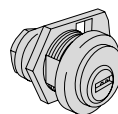
1.OH610.00.0



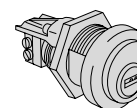
1.OH210.00.0.12



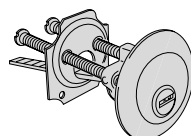
1.OH150.00.0.12



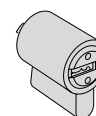
1.OH410.00.0.12



**1.OH415.01.0.12
1.OH415.03.0.12**



1.OH510.00.0.12



**1.OH610.10.0
1.OH611.10.0**